

GARDEN PESTS

GOOD BUGS, BAD BUGS

Speaker: Marilyn Holt

LARVAE STAGE

ADULT

Wireworm Beetle



Vine Beetle/Weevil



Tomato Hornworm



European Chafer Beetle



Colorado Potato Beetle



GARDEN PESTS

GOOD BUGS, BAD BUGS

Speaker: Marilyn Holt

LARVAE STAGE

ADULT

Carrot Rust Fly



Click Beetle aka Wireworms



Red Lily Leaf Beetle



Sawfly



Japanese Beetle



GARDEN PESTS

GOOD BUGS, BAD BUGS

Speaker: Marilyn Holt

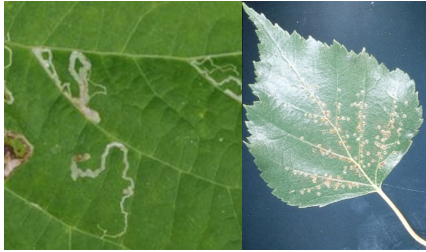
LARVAE STAGE

ADULT

Gypsy Moth



Beech Leaf Miner



Apple Coddling Moth



Apple Maggot



PUPAE



Aphids



GARDEN BENEFICIAL INSECTS

GOOD BUGS, BAD BUGS

Speaker: Marilyn Holt

LARVAE STAGE

ADULT

Lacewing

The garden's most efficient assassin.

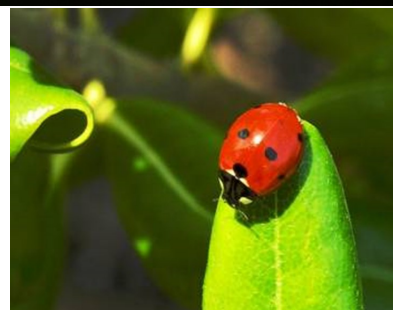
One larvae can eat over 12 million aphids in one single season.



Ladybug

In all its' life forms, ladybugs are voracious feeders.

1 adult can eat up to 400 aphids a day.



Hover Fly

The larvae feeds on must sucking insects, i.e. aphids and mites.

The adult is a pollinator.



Spined Soldier Bug (from the family of stinkbugs but this variety does not feed on plants).
Predators of the larvae stages of Gypsy Moth, Cabbage Looper, Colorado Potato Beetle, Mexican Bean Beetle and many other beetle larvae.

Nymph &
Eggs



Nematodes

When applied in the vicinity of a susceptible insect, this [biological insecticide](#) hunts, penetrates, and kills them. Larvae, caterpillars, lawn grubs, and maggots, are most susceptible, but some adults may also be killed.

Make sure the area is moist before treating.

